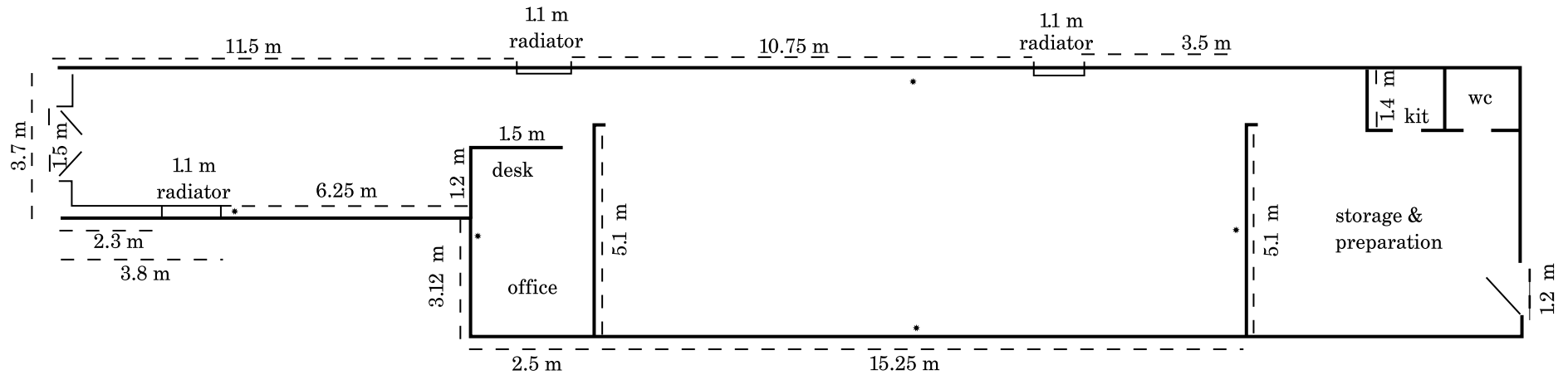


Approximate Scale: 1 cm = 1.2 m



**Walls:** gyproc over 1.3 cm plywood continuous, not in contact with ceiling  
 all walls are 3.4 m high except first 4m left of entrance (2.3 m high)  
 and wall right entire length from radiator to office (2.7m high)

**Floor:** concrete, scored

**Lights:** track lighting with dimmer switches

**Ceiling:** busy with pipes, painted light gray  
 4m high; lights at 3.4 m; pipes/beams at 3.4 m

Running Meters 57.5m

Electrical Outlets: •